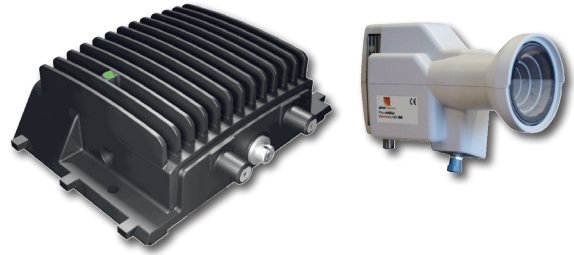


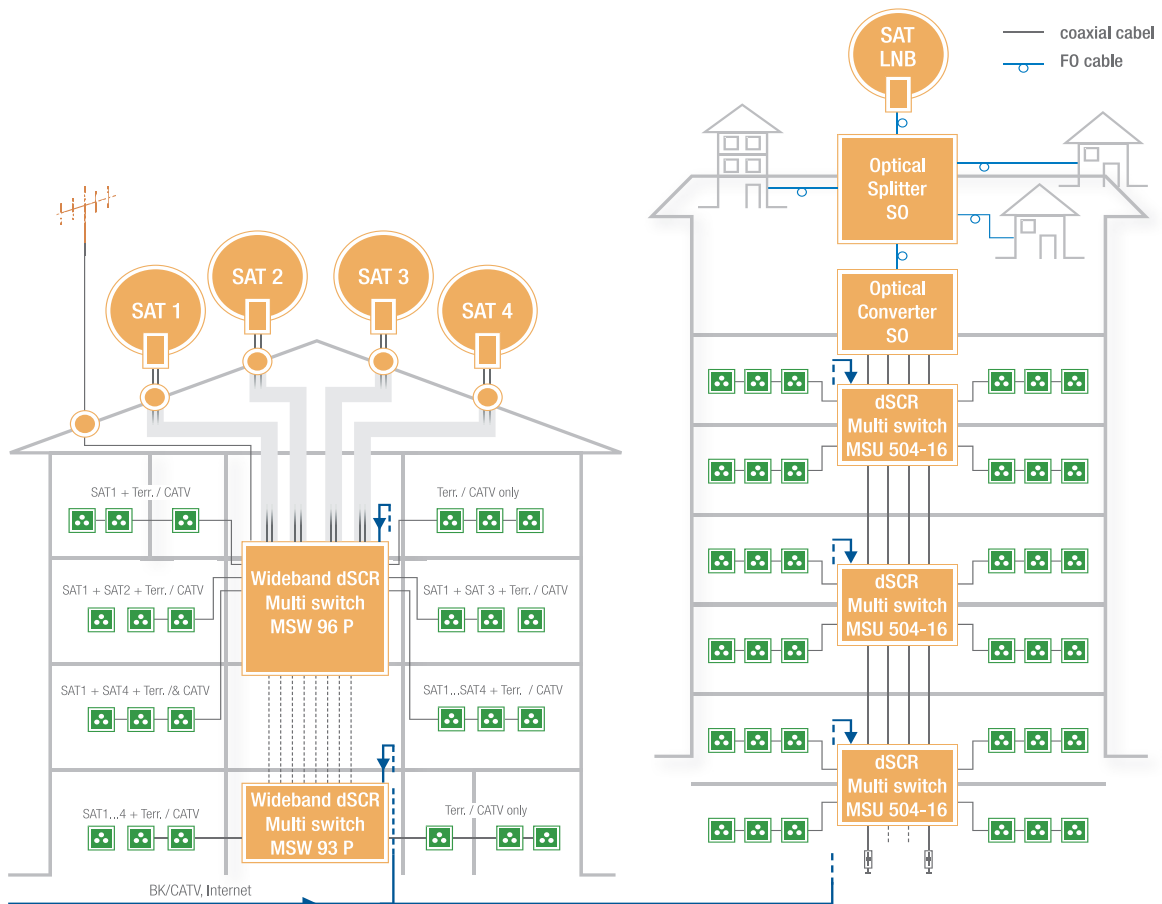
## OPTICAL dSCR SAT TERMINATION UNIT

### Global dSCR Termination Converter (GTU)

- || Only usable in combination with optical LNB (page 10)
- || Optical to RF converter
- || **SKY® approved**
- || Automatic Gain Control (AGC)
- || LED Status indication for diagnostics



Type		SO dSCR GTU
Item No.		57003337
Frequency range	MHz	88...2150
User bands		16
Return loss	db	10
Output level (Legacy)	dBμV	75 (typ.)
Output level (dSCR)	dBμV	72 (typ.)
Isolation SAT-TER	db	min. 35
Input voltage	VDC	20
Current consumption	mA	max. 430
Dimensions	mm	134 x 105 x 43 (136 x 135 x 43 incl. plastic housing)



|| Example 4-Satellite Distribution System with MSW 96 /93 P

|| Example SAT Signal System with Fibre Optic Distribution for several buildings